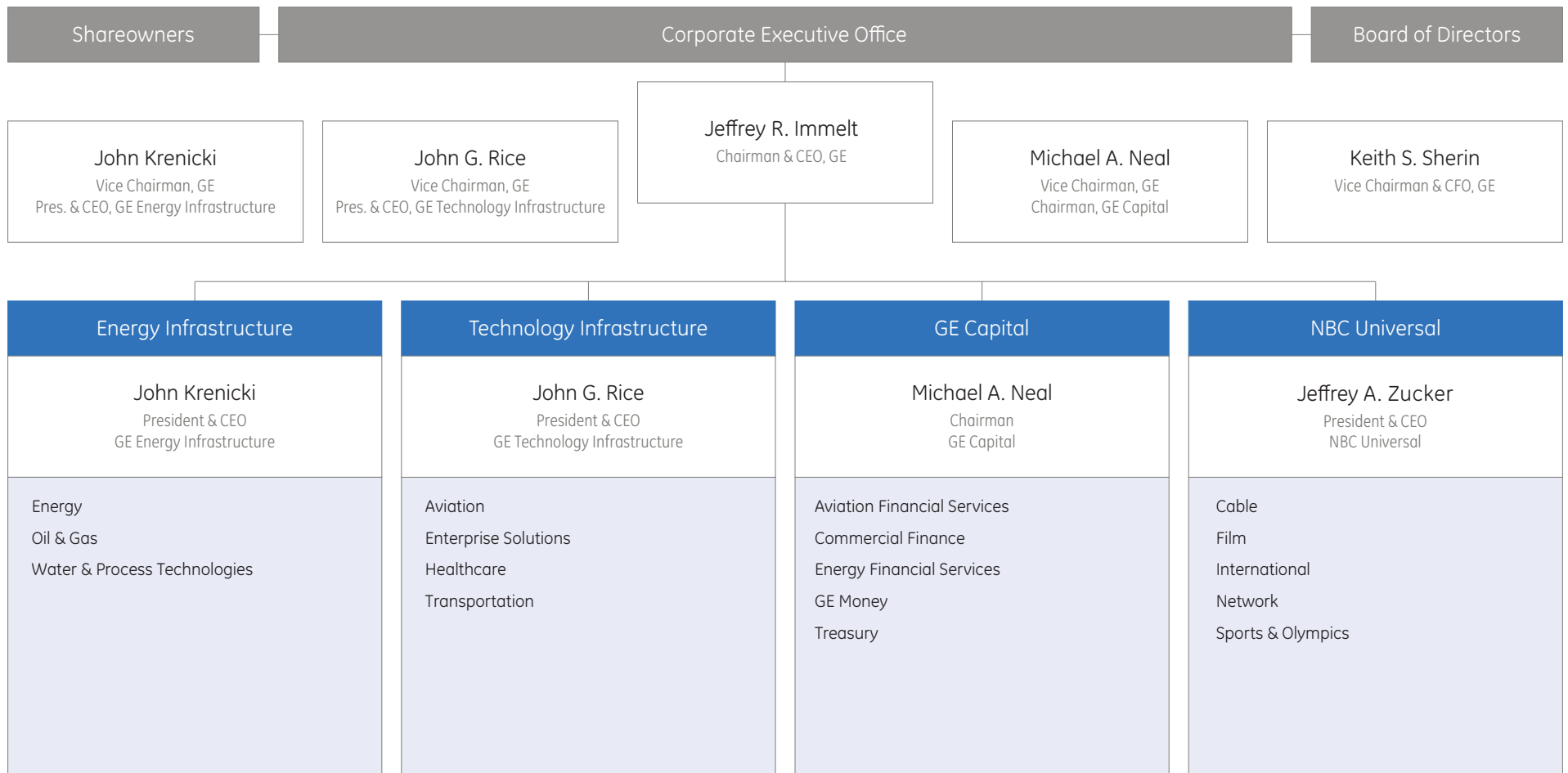




imagination at work

GE Company Organization Chart

LAST UPDATE JULY 2008



Corporate Staff

Business Development	Commercial & Communications	Corporate Initiatives Group	Finance	Global Research	Human Resources	International	Legal	Supply Chain Operations
Pamela Daley	Elizabeth J. Comstock	Gary M. Reiner	Keith S. Sherin	Mark M. Little	John F. Lynch	Ferdinando Beccalli-Falco	Brackett B. Denniston III	Wayne M. Hewett